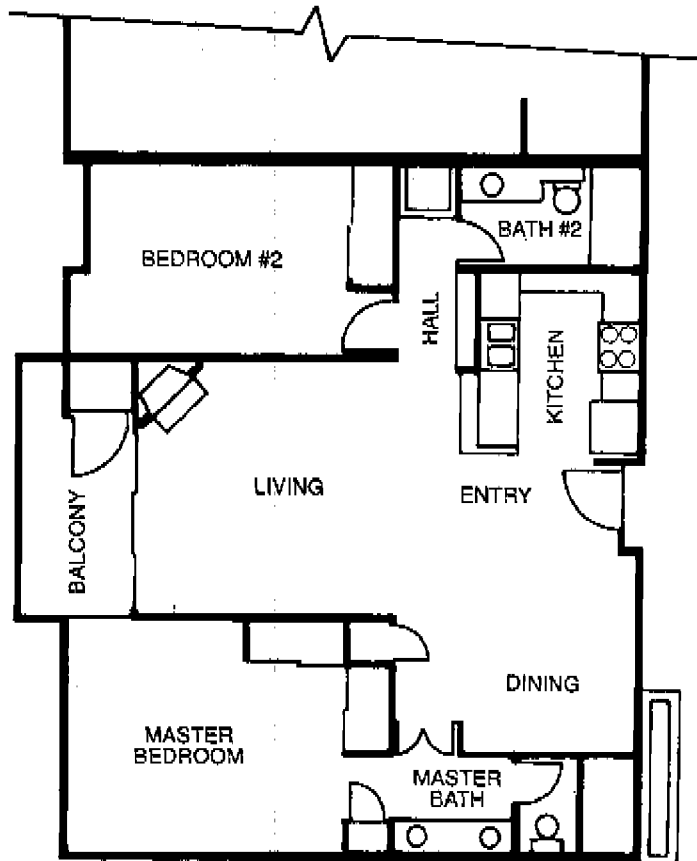


BirdRock

1,111 S.F.
Two Bedrooms
Two Baths



- All ocean view units
- Paneled doors
- European-style cabinetry
- Whirlpool® designer white appliances
- Tile entryways & bath
- Fireplace
- Air-conditioning
- Mirrored wardrobe doors
- Double-glazed windows
- Microwaves

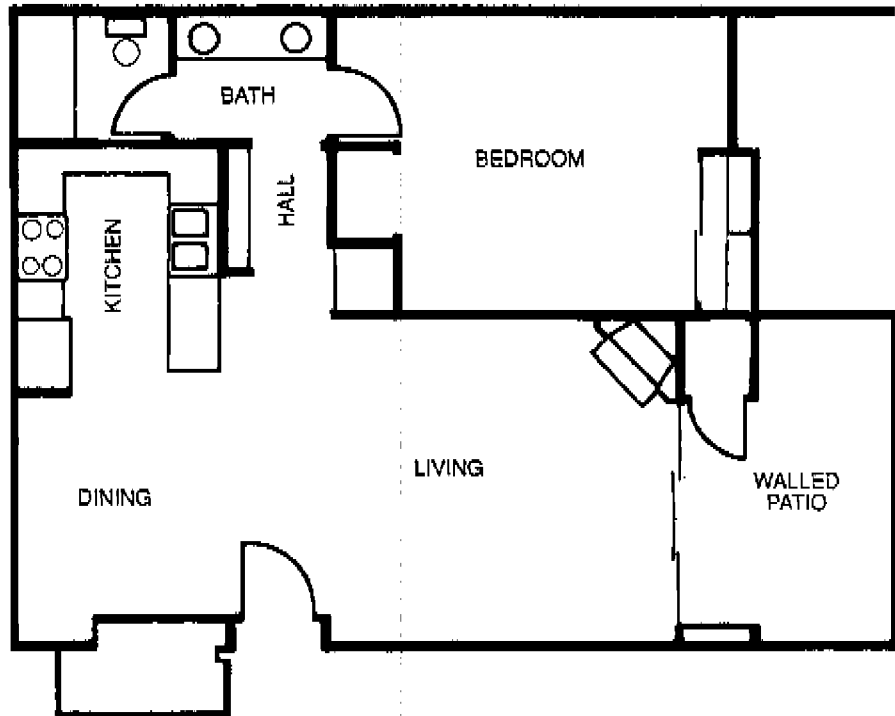
LAJOLLA
Promenade

Mt. Soledad

872 S.F./845 S.F.

One Bedroom

One Bath



- Mountain view
- Paneled doors
- European-style cabinetry
- Whirlpool® designer white appliances
- Tile entryways & bath
- Fireplace
- Air-conditioning
- Mirrored wardrobe doors
- Double-glazed windows
- Microwaves

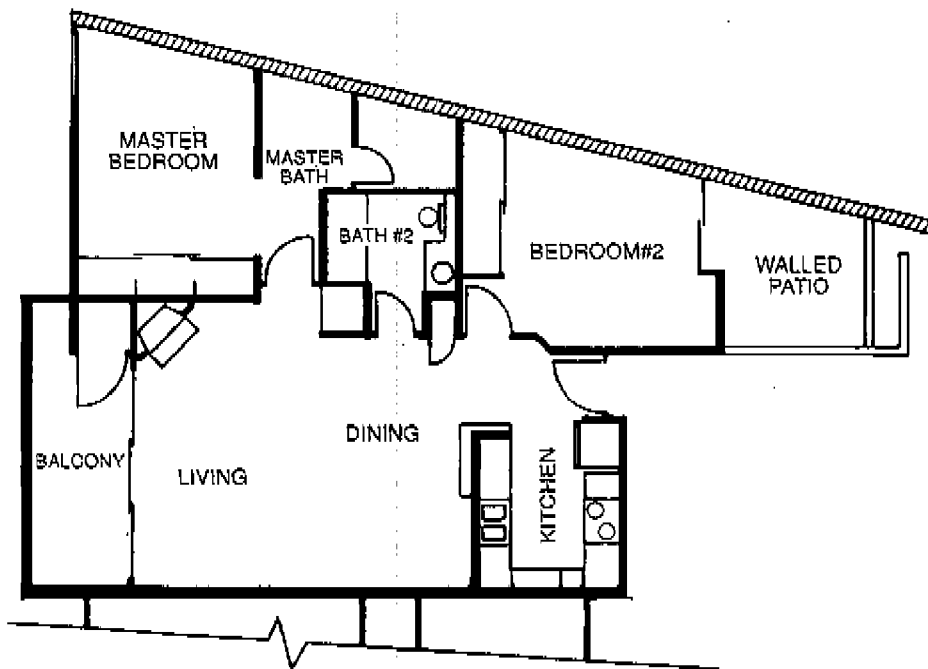
LA JOLLA
Promenade

La Costa

1,110 S.F.

Two Bedrooms

Two Baths

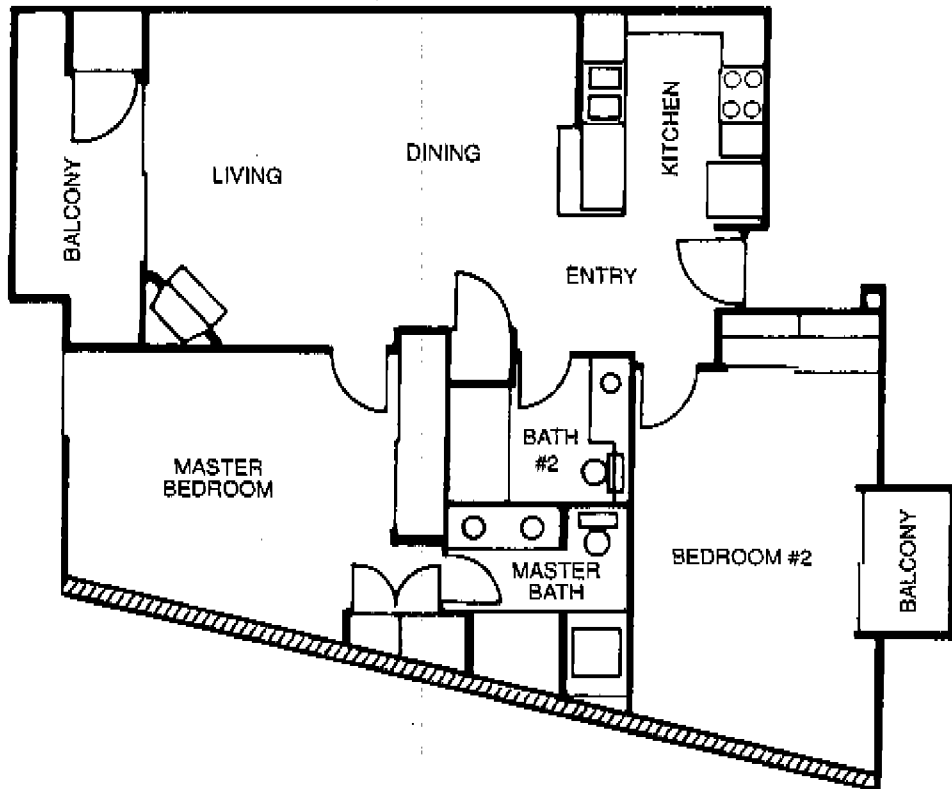


- Ocean view units
- Enclosed patio
- Paneled doors
- European-style cabinetry
- Whirlpool® designer white appliances
- Tile entryways & bath
- Fireplace
- Air-conditioning
- Mirrored wardrobe doors
- Double-glazed windows
- Microwaves

LAJOLLA
Promenade

Chelsea

1,140 S.F.
Two Bedrooms
Two Baths



- Ocean and Mountain views
- Corner units
- Paneled doors
- European-style cabinetry
- Whirlpool® designer white appliances
- Tile entryways & bath
- Fireplace
- Air-conditioning
- Mirrored wardrobe doors
- Double-glazed windows
- Microwaves

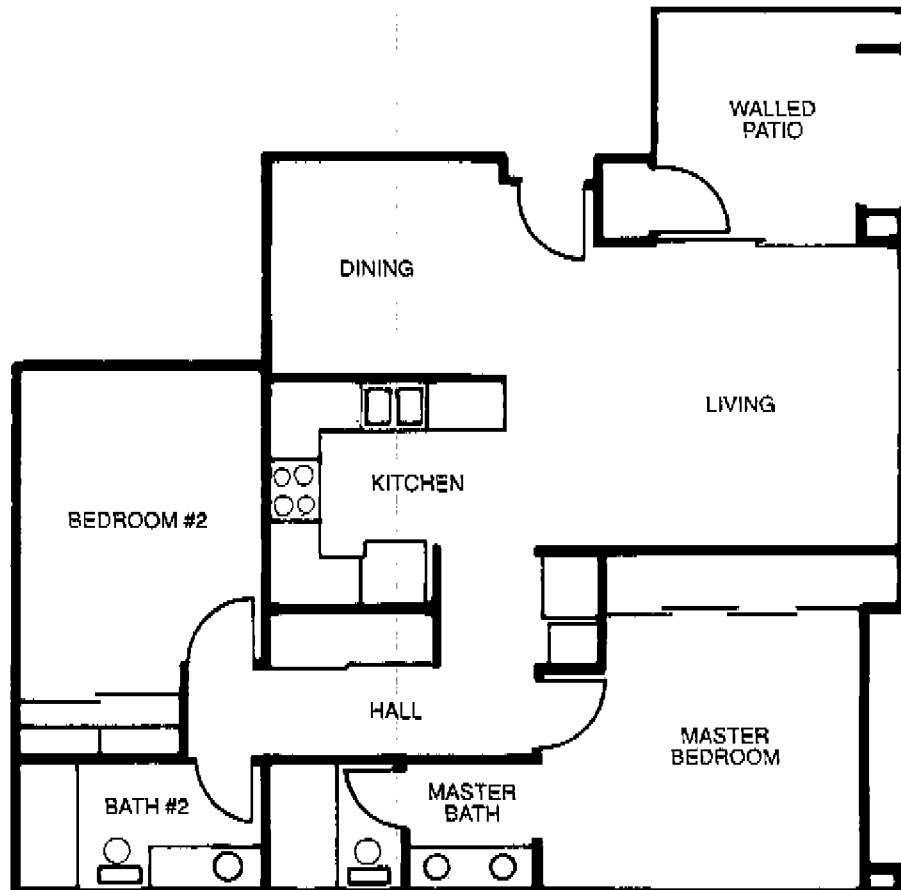
LAJOLLA
Promenade

Corona Vista

1,072 S.F./1,044 S.F.

Two Bedrooms

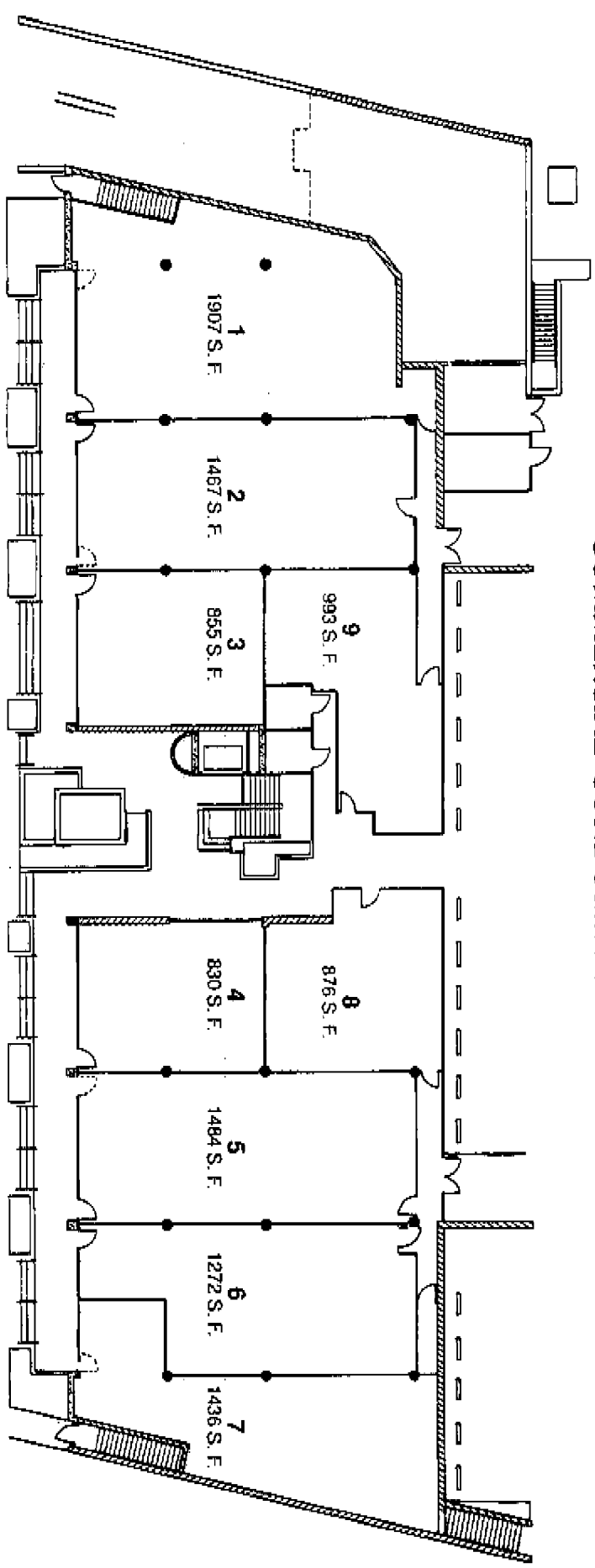
Two Baths



- Mountain views
- Enclosed patio & balcony
- Paneled doors
- European-style cabinetry
- Whirlpool® designer white appliances
- Tile entryways & bath
- Fireplace
- Air-conditioning
- Mirrored wardrobe doors
- Double-glazed windows
- Microwaves

LAJOLLA
Promenade

COMMERCIAL CONDOMINIUMS



LA JOLLA
Prudential